



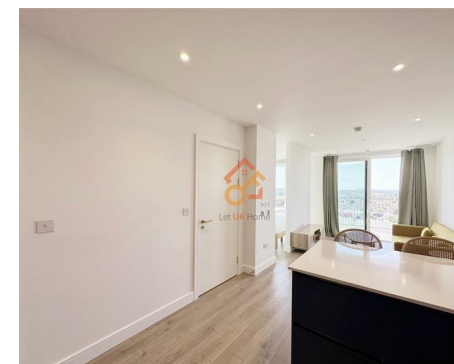
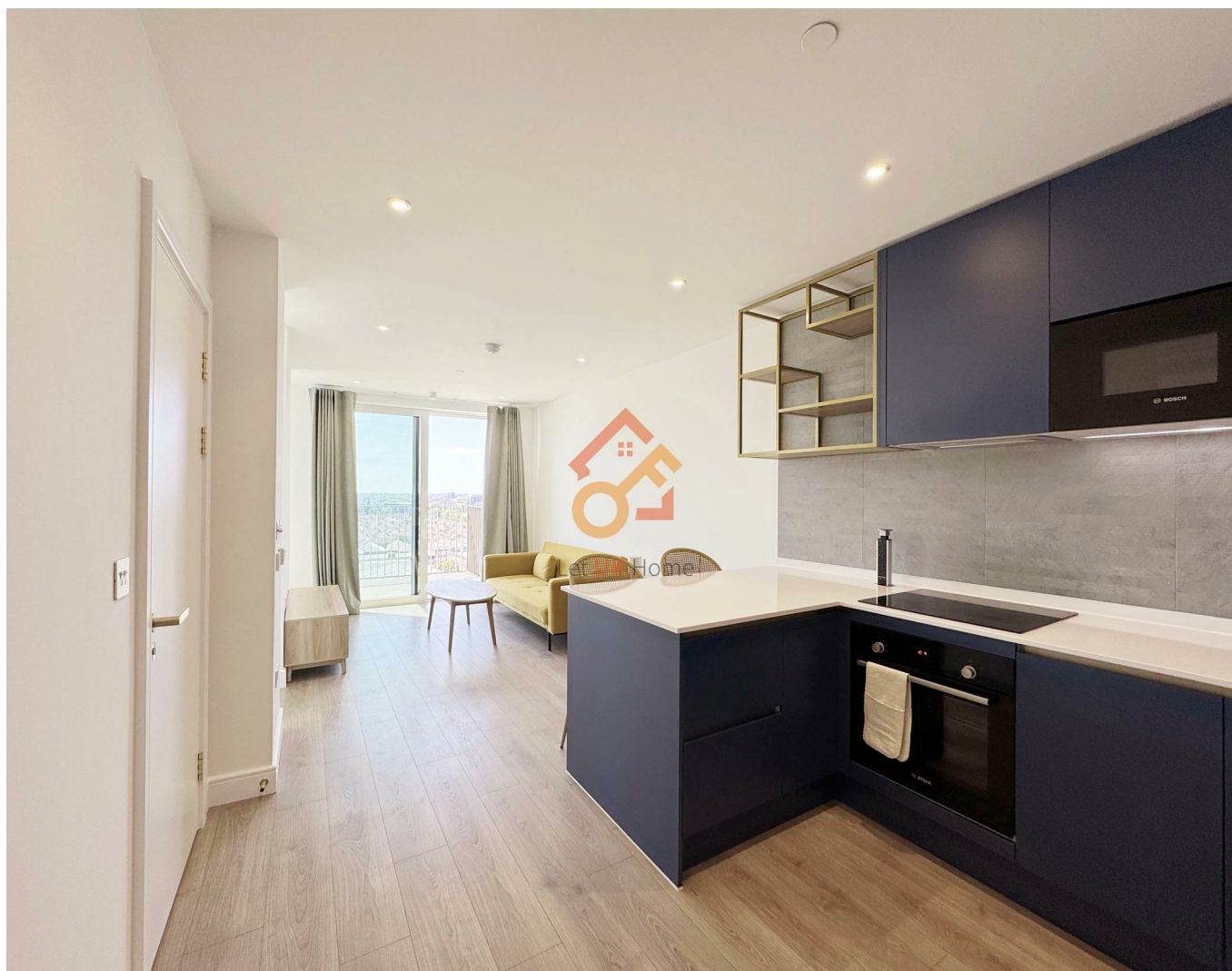
Let **UK** Home

1 Bedrooms

Flat - Studio

Located in Wembley

£1,700 Per Month



info@letukhome.co.uk

<https://www.letukhome.co.uk/>

01795 358 886



12 Quay Walk Wembley

HA0 1BE



Let UK Home present this spectacular studio property in Waterview House, part of Grand Union.

This apartment features a meticulously designed open-plan living, kitchen, and dining area leading to a private balcony. The bedroom comes with built-in wardrobes, complemented by a spacious family bathroom.

Residents of this exceptional development will have exclusive use of fitness gym, bowling alley, screening room and residents lounge. Furthermore, residents will also benefit from a concierge and an unrivalled selection of shops, bars, restaurants, leisure facilities and beautiful courtyards.

Grand Union is located in the Alperton between Wembley and Ealing, enjoying a variety of resources in both boroughs. There are many restaurants, bars, shopping malls, supermarkets, bank branches, post offices, etc. in the surrounding area.

12 Quay Walk Wembley

£1,700 Per Month

- 10th Floor
- 24h Security
- Bowling Alley
- Concierge Service
- Cinema & Game Room
- Residents Lounge





TOTAL INTERNAL AREA	40 sq m	434 sq ft
TOTAL EXTERNAL AREA	5 sq m	59 sq ft
Kitchen / Dining / Living	2.72m x 7.52m	8'11" x 24'8"
Bedroom	2.41m x 3.04m	7'11" x 9'11"
Balcony	3.04m x 1.80m	9'11" x 5'11"



Let **UK** Home

3F 2 Eastbourne Terrace
Paddington
London
W2 6LG

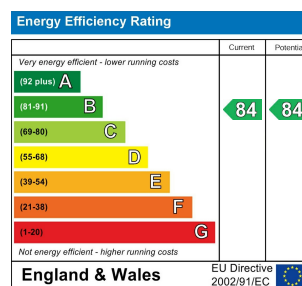
01795 358 886

info@letukhome.co.uk

Council Tax Band: C

Local Authority:

Agents Note: Whilst every care has been taken to prepare these particulars, they are for guidance purposes only. All measurements are approximate and are for general guidance purposes only and whilst every care has been taken to ensure their accuracy, they should not be relied upon and potential buyers/tenants are advised to recheck the measurements.



<https://www.letukhome.co.uk/>